

DAFRON MAKİNE

Karaağaç, Hadımköy-istanbul CD.
NO:26 D:3A 34500
Büyükkçekmece/İstanbul

TEL:+90(212) 451 57 91/92
FAX:+90(212) 451 57 93

info@martekskimya.com

DAFRON

SCREEN PRINTING MACHINES





Dafron Makine, a subsidiary of Marteks kimya was established to manufacture high quality durable Textile screen printing and equipment.

More than three decades' expertise of manufacturing textile screen printing inks, auxiliary products and rendering quality services, Marteks kimya employed a team of highly skilled staff, the majority of whom profound experience in manufacturing and research & development to produce state of the art screen printing machines which can guarantee the quality, productivity, durability, strength and reliability and to become a vital asset of a printing company.

Through up-to-date manufacturing techniques and component parts from the best suppliers, Dafron Makine has made large investment in R & D with aim of being a national pride and to remain at the forefront of textile printing industry.

Worthwhile Investment For;

- Best Designed Machines to meet every printer demand*
- Easy and simple to Operate*
- Vital importance to multiple safety features*
- Maximum Printing speed*
- Etc etc*

DAFRON



SCREEN PRINTING MACHINE

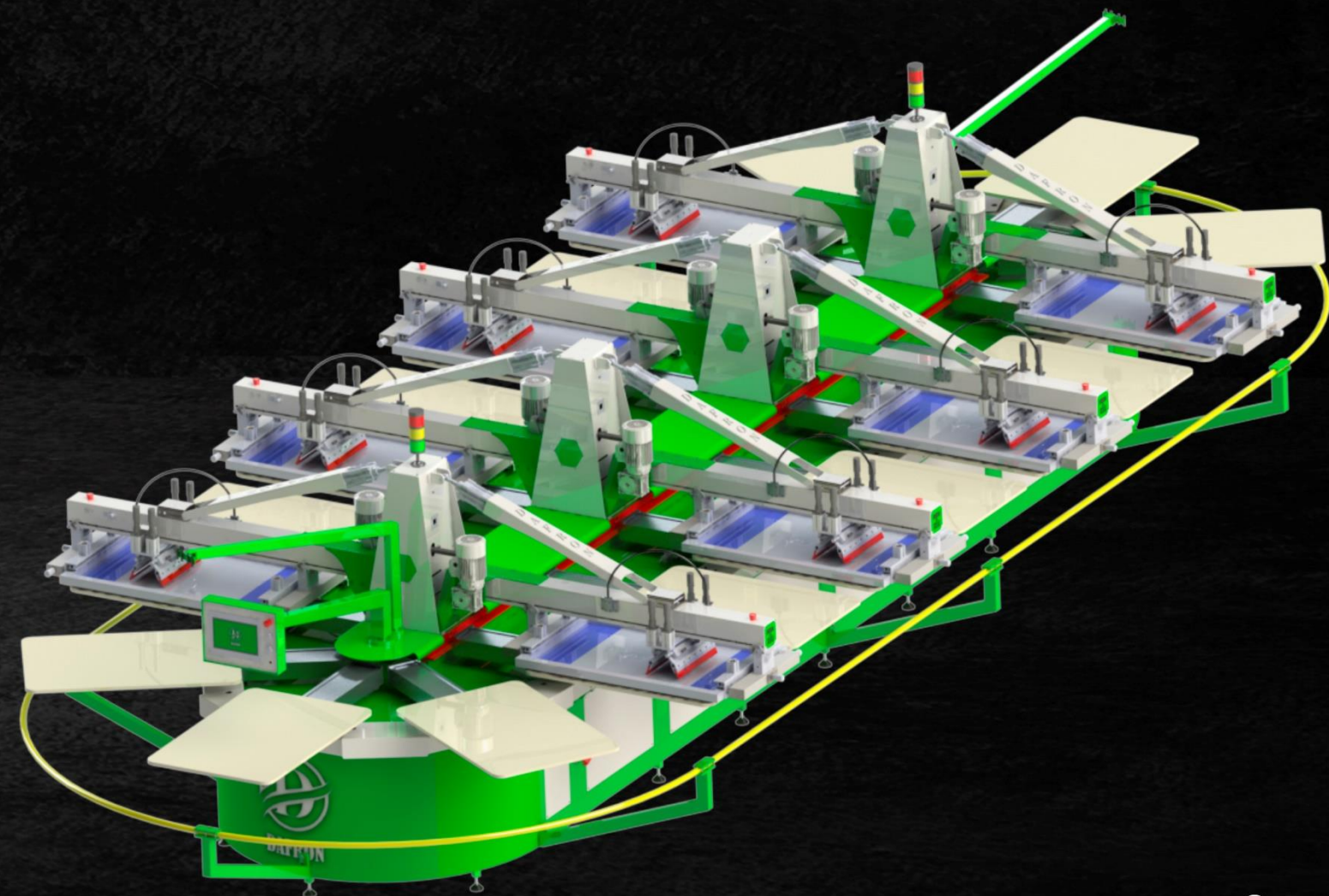
MAIN FEATURES

- * Aluminum honeycomb pallets
- * Electric motorized squeegee movement system
- * Individual control panel on each printhead
- * Pneumatic mold connection system with "U" or Pin system
- * Print head central uplift system
- * AC Servo motorized rotation system
- * Central control panel with LCD touch screen
- * Fine adjustment system that allows adjustment in all directions
- * Individual control system on each head for height, angle, pressure, number of squeegee and speed
- * Placement of the flash cure dryers under the print heads
- * Start pedal

Dafron Viper		V8	V10	V12	V14	V16	V18	V20
Number of colors		8	10	12	14	16	18	20
Production Rate/Hour		750						
Number of Flash Cure Connection		8	10	12	14	16	18	20
Height		1,8m						
Width		3,8m						
Number of Pallets	XL	20	26	28	32	36	40	44
	XXL	26	32	38	44	50	56	62
Lenght	XL	8,7m	11m	11,7m	13,2m	14,8m	16,3m	17,9m
	XXL	11m	13,2m	15,6m	17,9m	20,2m	22,5m	24,8m

XL = 1 Printing Area + 1 Curing Area

XXL=1 Printing Area + 1 Curing Area + 1 Cooling Area



DAFRON

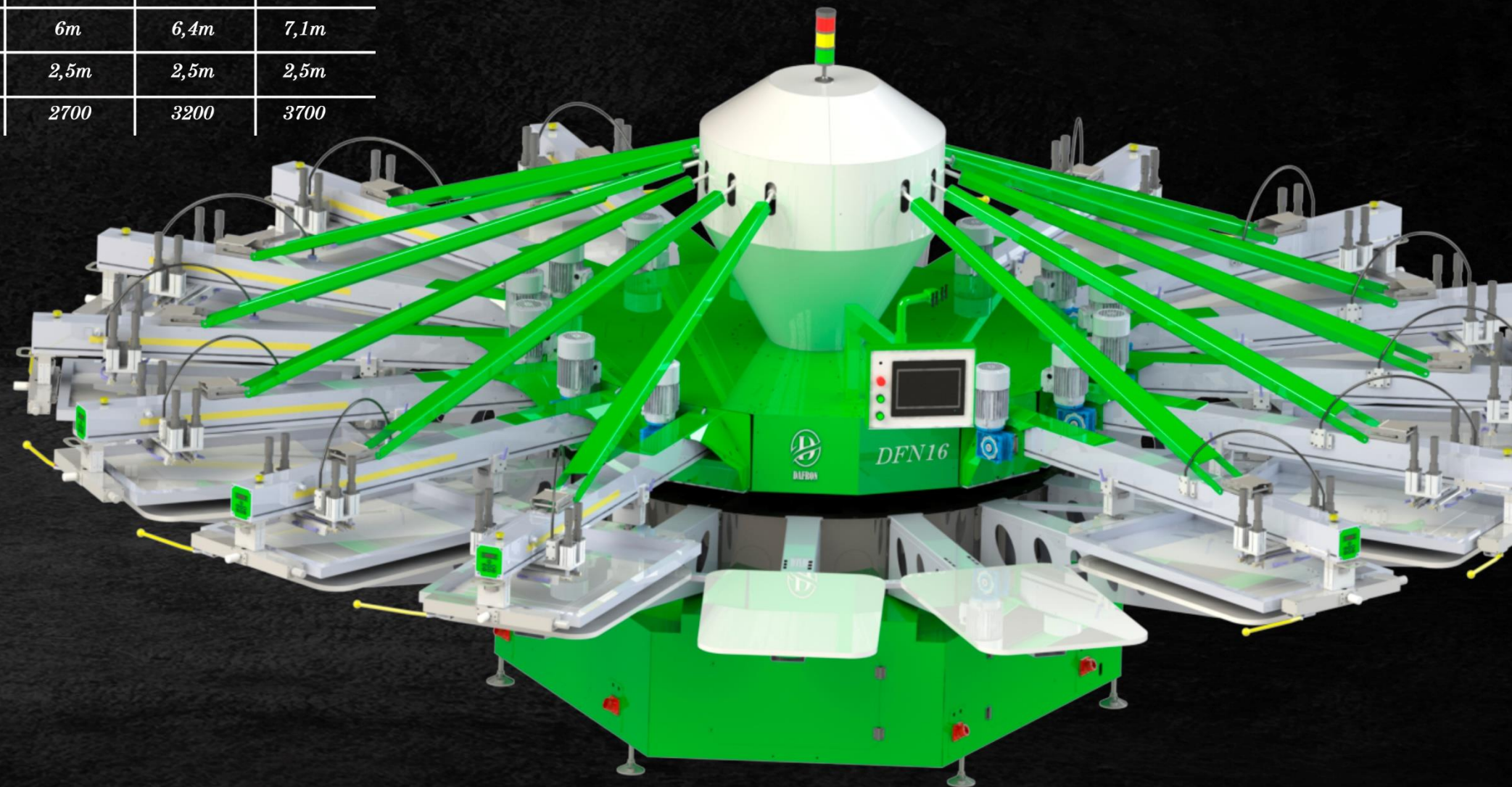


SCREEN PRINTING MACHINE

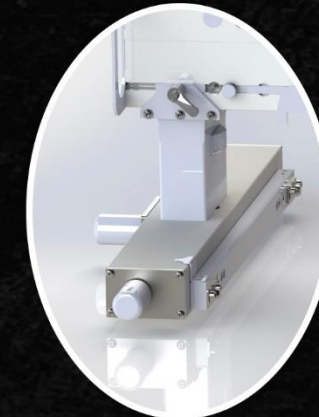
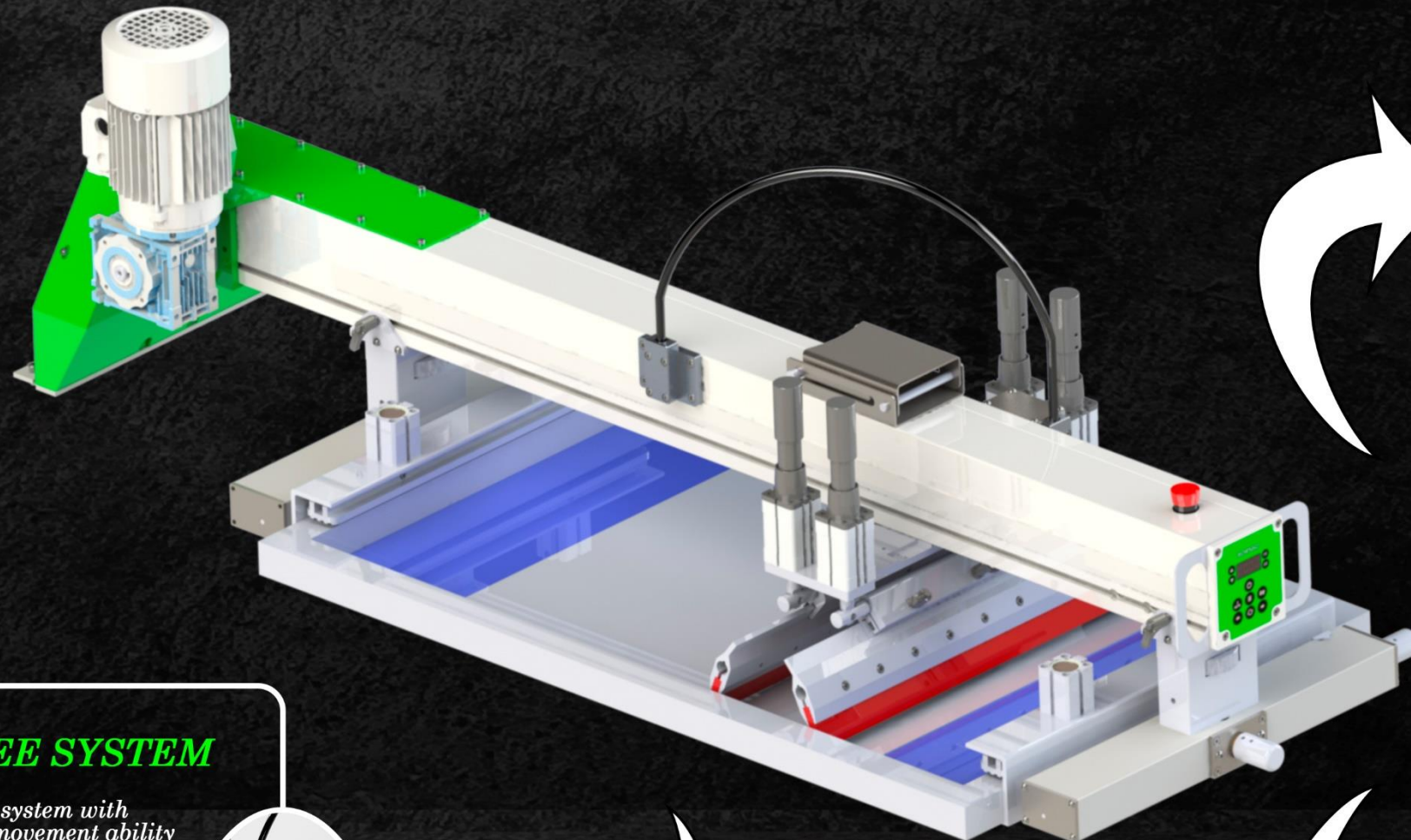
MAIN FEATURES

- * Aluminum honeycomb pallets
- * Electric motorized squeegee movement system
- * Individual control panel on each printhead
- * Pneumatic mold connection system with "U" or Pin system
- * Print head central uplift system
- * AC Servo motorized rotation system
- * Central control panel with LCD touch screen
- * Fine adjustment system that allows adjustment in all directions
- * Individual control system on each head for height, angle, pressure, number of squeegee and speed
- * Placement of the flash cure dryers under the print heads
- * Start pedal

<i>Dafron DFN</i>	<i>DFN6</i>	<i>DFN8</i>	<i>DFN10</i>	<i>DFN12</i>	<i>DFN14</i>	<i>DFN16</i>	<i>DFN18</i>
<i>Number of Max. ColorS</i>	6	8	10	12	14	16	18
<i>Number of Pallets</i>	8	10	12	14	16	18	20
<i>Number of Flash Cure Connection</i>	3	4	5	6	7	8	9
<i>Prodotion Rate/ Hour</i>	1200						
<i>Com. Air Consumption (Bar)</i>	7 (Each Printhead)						
<i>Max. Consumption (kVA)</i>	4	4,5	5,5	6	7	7,5	8
<i>Diameter</i>	4,4m	4,7m	5,3m	5,5m	6m	6,4m	7,1m
<i>Height</i>	2,2m	2,4m	2,4m	2,4m	2,5m	2,5m	2,5m
<i>Weight (kg)</i>	1100	1700	1900	2500	2700	3200	3700



DAFRON

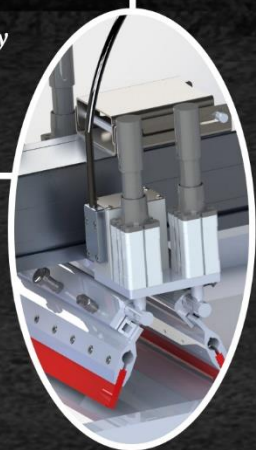


BEADED SYSTEM

Mold connection system with four pieces beads and easy connect-removal function to frame

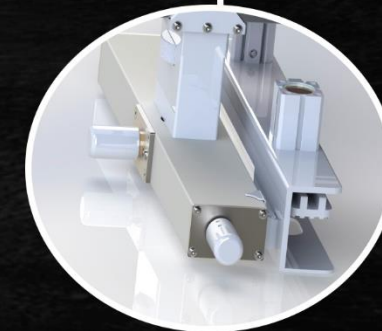
SQUEEGEE SYSTEM

Squeegee system with independent movement ability by stroke adjustable piston



JAWED SYSTEM

Mold connection system which pressured by four pieces pistons to immobilize screen and easy connect-removal function to frame



DAFRON

DAFRON FLASH DRYER

MAIN FEATURES

- *Thermal insulation of high density rockwool panels
- *Axial flow fan for hot air circulation with adjustable speed and air purification filter
- *Antistatic and high tensile strength PTFE coated mesh conveyor belt
- *Bidirectional conveyor with adjustable speed
- *Heated by electricity
- *Temperature range from 90 to 200 °C

Dafron Flash Dryer	Closed Area	Belt	Belt's Width	Heat by
DFD5	5 Metre	One	1300mm	Electricity
DFD6	6 Metre	One	1300mm	Electricity
DFD7	7 Metre	Two	1000mm	Electricity
DFD8	8 Metre	One	1300mm	Electricity



DAFRON

DAFRON FLASH CURE

MAIN FEATURES

- *Adjustable power control
- *Fan for hot air circulations
- *Adjustable curing time
- *infrared lambda (2000W)

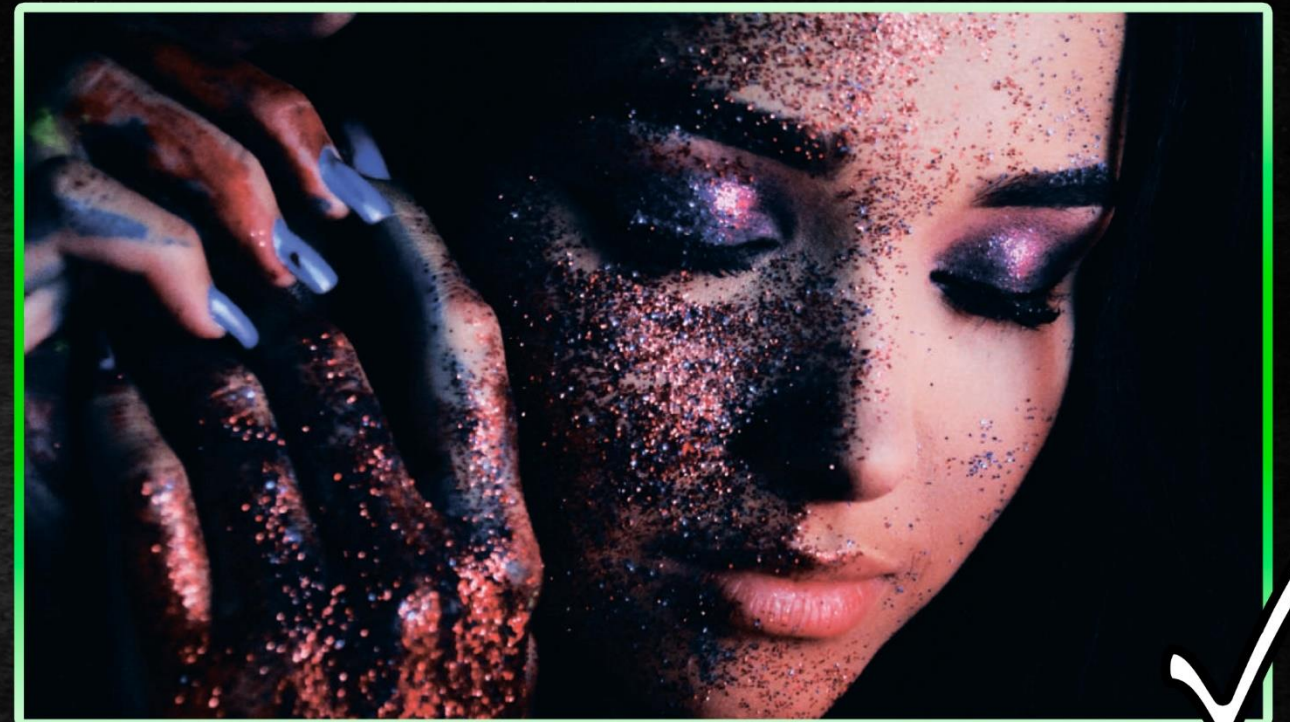
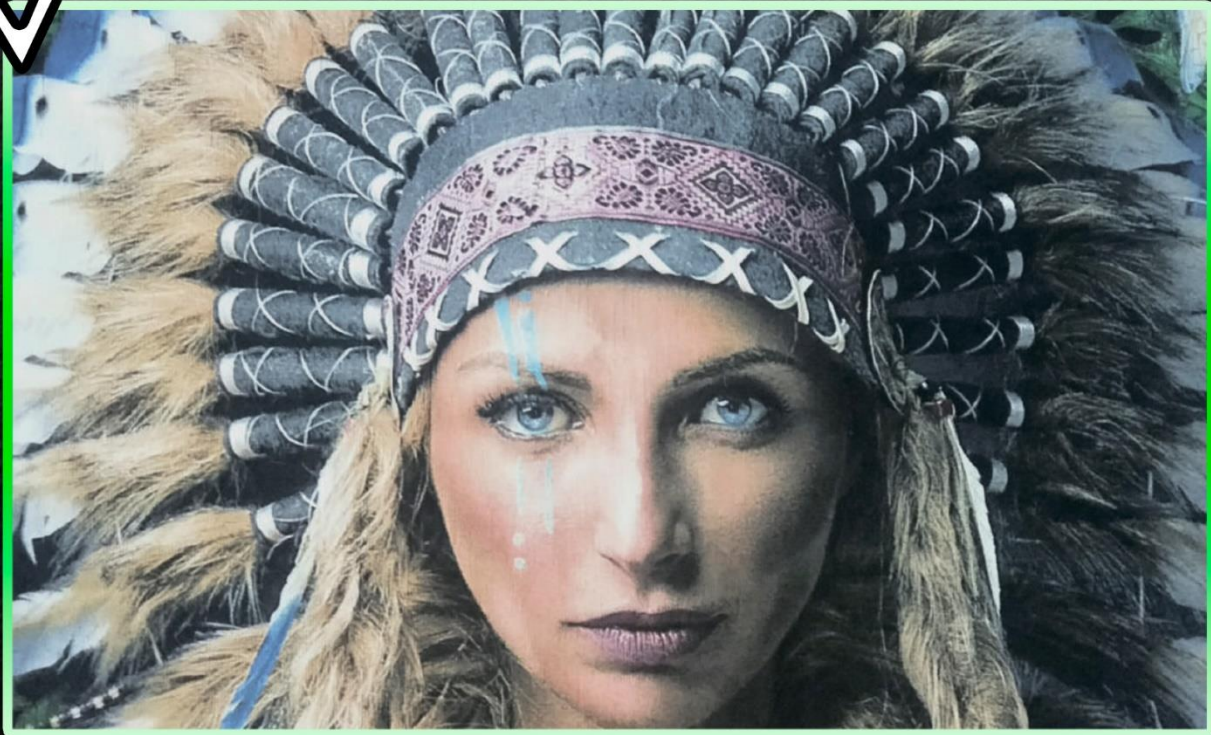
TECHNICIAL SPECIFICATIONS

Min. Curing Area	50X70
Max. Curing Area	70X100
Lamp's Power(W)	2000
Lamps	9
Time Setting	(✓)



DAFRON

PRINT SAMPLES

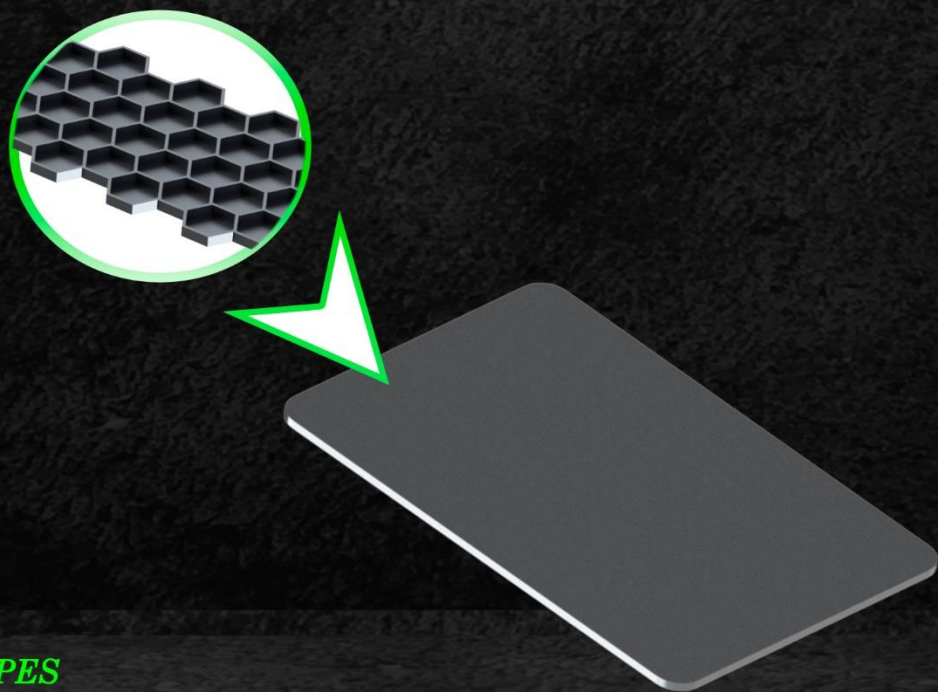


DAFRON

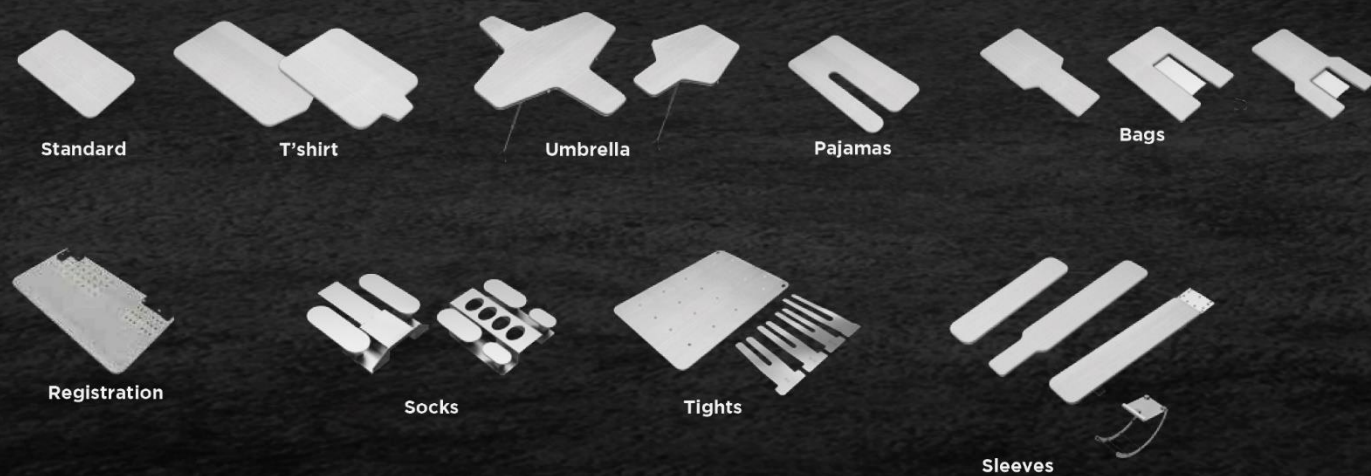
PALLETS

PALLET FEATURES

- *Aluminum honeycomb pallets
- *Precision machining by CNC
- *Resistance up to 160 °C
- *Different pallet shapes for different products



PALLET SHAPES



DAFRON

SCREEN PRINTING MACHINES

